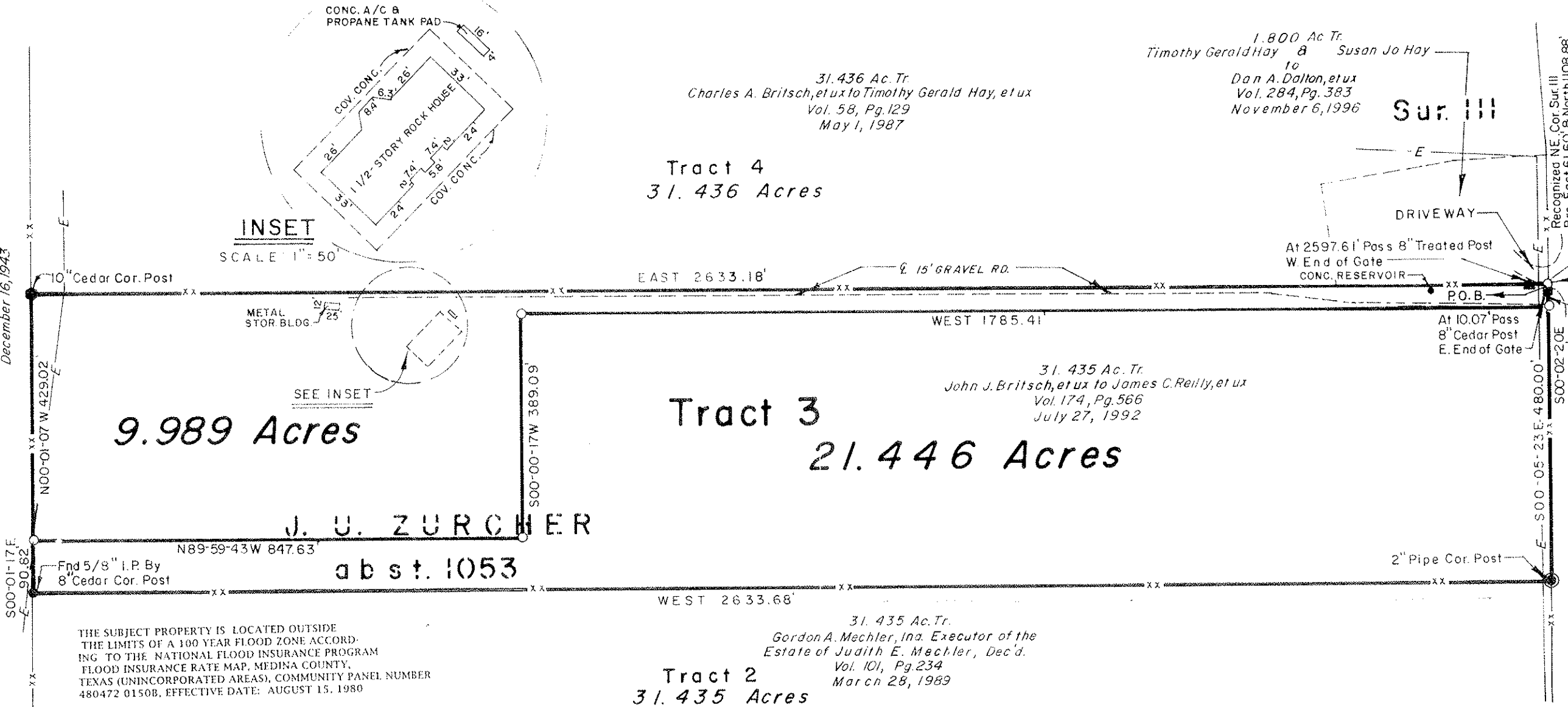


MEDINA COUNTY, TEXAS

N

Fourth 88 Ac., More or Less
Alma Britsch Goff to William N. Burgin
Vol. 126, Pg. 194
December 16, 1943



THE SUBJECT PROPERTY IS LOCATED OUTSIDE THE LIMITS OF A 100 YEAR FLOOD ZONE ACCORDING TO THE NATIONAL FLOOD INSURANCE PROGRAM FLOOD INSURANCE RATE MAP, MEDINA COUNTY, TEXAS (UNINCORPORATED AREAS), COMMUNITY PANEL NUMBER 480472 0150B, EFFECTIVE DATE: AUGUST 15, 1980

The bearings are relative to the bearing along the North line of said 31.435 acre tract of land between a 10" diameter cedar corner post at the Northwest corner and a 5/8" iron pin set in pavement for the Northeast corner having a bearing and distance of East 2633.18 feet.

Right of Way Easement - John J. Britsch and Betty Britsch to Yancey Water Supply Corp. - Vol. 178, Pg. 351 - June 20, 1990

Electrical Distribution Power Line Easement - James C. Reilly to Medina Electric Cooperative, Inc. - Vol. 184, Pg. 872 - October 1, 1992

A Plat of 31.435 Acres of land situated about 3.8 miles N 21°E of Hondo, in Medina County, Texas

I CERTIFY THAT THE FOREGOING PLAT WAS PREPARED FROM AN ACTUAL SURVEY MADE UNDER MY SUPERVISION ON THE GROUND AND THAT SAME IS TRUE AND CORRECT WITNESS MY HAND AND SEAL THIS THE 24 DAY OF July, 1992.

Charles W. Rothe
CHARLES W. ROTHE

